



IDENTIVE

CLOUD 2700 R

Contact Smart Card Reader



- **Ready to use**
Driver support for all major PC operating systems
- **All application ready**
Supports all major smart card ICs and technologies in just one device
- **Fast**
Transaction time optimized for maximum end user acceptance
- **User Convenience**
Modern design optimized for easy and ergonomic operation
- **SmartOS™ powered**

Typical Applications

The Identive CLOUD 2700 R is the ideal PC-Linked USB contact smart card reader for a huge variety of applications. Providing full compliance with all major industry standards such as ISO/IEC 7816, USB CCID, PC/SC, and Microsoft WHQL the CLOUD 2700 R seamlessly works with virtually all contact smart cards and PC operating systems.

The full support and compliance to EMV 2008 and GSA FIPS 201 expand the use to very specific use applications requiring additional security and data protection.

It represents the perfect mix between modern stylish design, ergonomic handling and a compact foot print.

The extended card data transmission rate of up to 600kBit/s with the support of TA1=97 enables shortest possible transaction times for maximum end user convenience.

The Identive specific SmartOS™ is featuring an easy and complete support of all major contact smart cards.

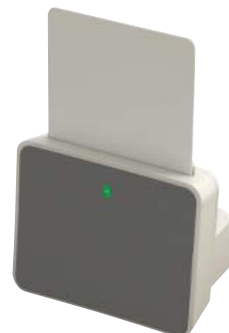
The end user experiences convenience, transaction time efficiency, security and reliability for use applications like network log-in, Windows authentication & Single Sign-On (SSO), banking and cashless payment applications as well as high security use cases for federal governments.



Optional Accessory:

CLOUD 2700 R with pre-assembled optional Standing Base Kit

- Easy conversion into a vertical insertion card reader for enhanced, ergonomic user experience
- Flexible and fast adoption to application specific use case
- Reader can be ordered with pre-assembled standing base kit





CLOUD 2700 R

Contact Smart Card Reader

Parameter	Identive CLOUD 2700R
Host Interface	
Host Interface	USB 2.0 CCID (USB 1.1 / 3.0 compliant)
Communication Speed	12 Mbps (USB2.0 full speed)
Smart Card Interface	
Supported standards	<ul style="list-style-type: none"> • ISO/IEC 7816 Part 1 to 4 • EMV 2008 Ver 4.2 Level 1
Supported Tag ICs	All major ISO/IEC 7816 compliant Smart Card IC support
Protocols	T=0, T=1
Interface speed	<ul style="list-style-type: none"> • up to 600 kBit/s (depending on card) • TA1=97
Clock frequency	ISO/IEC 7816 compliant up to 5 MHz, Operates up to 12 MHz
Supported smart card types	5V, 3V and 1.8V, ISO/IEC 7816 Class A/B/C
Power to smart card	60mA in Class A; 55mA in Class B; 35mA in Class C
Smart card detection	<ul style="list-style-type: none"> • Card present switch • Automatic power on/off • Short Circuit protection
Card size	ID-1
Contact type	Sliding Contact Socket (8 pin)
Driver & Software	
PC/SC driver	PC/SC Specification Ver. 2.01.09 for <ul style="list-style-type: none"> • Windows® XP/Vista/7/8 (32&64Bit) / Windows® Server 2003/2008/2012 / Windows® CE 6.0, 7.0 • MacOS 10.5.x, 10.6.x, 10.7.x, 10.8.x • Linux 2.4.x, 2.6.x (32&64Bit)
Software	<ul style="list-style-type: none"> • PC/SC API • CT-API (through wrapper on top of PC/SC) • Synchronous-API (through wrapper on top of PC/SC) • M-Card API (through wrapper on top of PC/SC)
Operating Conditions	
Power supply	USB Bus powered
Power consumption	< 6mA, excluding smart card; <500µA in Standby Mode
Dimension	<ul style="list-style-type: none"> • 70x60x16mm / 2.756x2.362x0.629 Inch • 70x63x62mm / 2.756x2.480x2.441 Inch (with optional Standing Base Kit)
Weight	<ul style="list-style-type: none"> • 66 g ± 5% / 0.15 lb ± 5% • 204 g ± 5% / 0.45 lb ± 5% (with optional Standing Base Kit)
Operating temperature range	0° to +50°C / +32 to +122 F
Storage temperature range	-20 to +60°C / -4 to +140 F
Operating humidity range	Up to 95% RH non condensing
Durability	Sliding Contacts 100.000 Card Insertions
MTBF	100.000 hours
Connector	1.5m USB Cable with USB Type A Connector
Status indicator	LED
Firmware	SmartOS™
Firmware in-field upgradeable	No
Certifications / Compliances	
Systems / Standards	EMV 2008 Ver 4.2 Level 1, ISO/IEC 7816, USB 2.0 Full Speed, CCID, Microsoft® WHQL
Regulatory / Environmental	CE, FCC, UL94, UL60950, VCCI, ICES, ANZ, CNS, HBCI, GSA APL, RoHS2, REACH, WEEE
Ordering Information	
Product Part Number	CLOUD 2700 R: 905369 / CLOUD 2700 R with pre-assembled standing base kit: 905369-1912

EMVCo approval of the interface module (IFM) contained in this Terminal shall mean only that the IFM has been tested in accordance and for sufficient conformance with the EMV Specifications, Version 3.1.1, as of the date of testing. EMVCo approval is not in any way an endorsement or warranty regarding the completeness of the approval process or the functionality, quality or performance of any particular product or service. EMVCo does not warrant any products or services provided by third parties, including, but not limited to, the producer or provider of the IFM and EMVCo approval does not under any circumstances include or imply any product warranties from EMVCo, including, without limitation, any implied warranties of merchantability, fitness for purpose, or non-infringement, all of which are expressly disclaimed by EMVCo. All rights and remedies regarding products and services which have received EMVCo approval shall be provided by the party providing such products or services, and not by EMVCo and EMVCo accepts no liability whatsoever in connection therewith.

Technical data are subject to change without notice.

Contacts

Identive GmbH
Oskar-Messter-Str. 13
85737 Ismaning
Germany

Identive Group, Inc
1900-B Carnegie Avenue
Santa Ana, CA 92705
USA

Identive KK
GoogolPlex Millennium Building 6F
4-4-20 Shiba, Minato-ku,
Tokyo, 108-0014, Japan

Identive GmbH
Unit 11, 4607-11,
The CENTRE
99 Queen's Road Central
Hong Kong

Phone + 49 89 9595 5000
sales@identive-infrastructure.com

Phone + 1 888 446 9008
scmsales@identive-infrastructure.com

Phone + 81 3 6414 6611
sales@identive-infrastructure.co.jp

Phone + 91 44 2254 0020
sales@identive-infrastructure.com