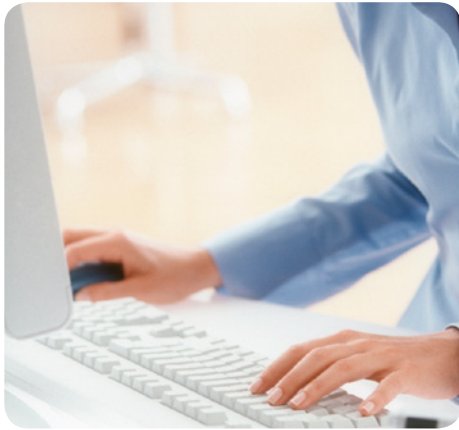


OMNIKEY® 3821 PIN Pad Reader



DESKTOP PIN PAD SMART CARD READER

- **Plug-and-Play** – Designed for plug-and-play to facilitate easy device installation and automatic configuration
- **Readily Compliant** – Multiple language support and compliant with all relevant industry standards for easy integration into PC environments
- **Secure Entry** – Common Criteria EAL 3+ (Class 2/3) certified to allow Secure PIN Entry (SPE) for signature and log-on application
- **Suits Any Application** – Compatible with virtually any contact smart card and a wide range of PC operating system

The OMNIKEY® 3821 reader offers all the trusted performance of OMNIKEY readers in a robust housing. Featuring a keypad for secure PIN (Personal Identification Number) entry, the reader is able to display messages from the application and has a display with two lines indicating the secure mode with a special sign. The commands for the Secure PIN Entry (SPE) can also be given in five languages by default.

Featuring Common Criteria EAL3+ security certification, the OMNIKEY 3821 is designed to safeguard against viruses, worms or phishing attacks. The content on the smart card is protected by a PIN to prevent unauthorized

copying or use of the information stored on the card. Sensitive data is neither stored on the PC nor communicated via insecure PC / reader connection but remains within the card / reader environment.

Easy to install, the OMNIKEY 3821 desktop PIN pad reader is ideally suited for online banking and digital signature applications as well as other online transactions, loyalty programs and healthcare solutions.

* For driver download, please visit www.hidglobal.com/omnikey.

FEATURES:

- Usage within an application is based on standardized interfaces like PC / SC, OCF (Open Card Framework) or CT-API.
- Meets the major standards of any financial institution, including ISO 7816, EMV 2000, Microsoft WHQL, USB, CCID, PC / SC, HBCI (Home Banking Computer Interface) and PC-2001 Specification
- Supports all major operating systems
- Graphical display with 2 x 16 characters and secure mode indicator
- SPE support for multiple languages including English, French, German, Italian and Spanish
- Complies with all relevant international industry standards
- Features a robust housing and optimized with an extra-long USB cable for added convenience

SPECIFICATIONS

Base Model Number	OMNIKEY [®] 3821
Dimensions	5.51" 3.14"x 1.97" (140 x 80 x 50 mm)
Weight (with cable)	6.1 oz (173 g)
Power Supply	Bus powered
Operating Temperature	32-131 °F (0-55 °C)
Operating Humidity	10-90% rH
HOST INTERFACE	
Host Interface	USB 2.0 CCID ¹ (also compliant with USB 1.1)
Transmission Speed	12 Mbps (USB 2.0 full speed)
SMART CARD INTERFACE	
Standards	ISO 7816 & EMV ² 2000 Level 1
Protocols	T=0, T=1, 2-wire: SLE 4432/42 (S=10); 3-wire: SLE 4418/28 (S=9), I ² C (S=8)
Card Size	ID-1 (full size)
Smart Card Interface Speed	420 Kbps (when supported by card)
Smart Card Clock Frequency	Up to 8 MHz
Supported Card Types	5V, 3V and 1.8V Smart Cards, ISO 7816 Class A, B and C
Power to Smart Card	60 mA
Smart Card Detection	Movement detection with auto power-off / Automatic detection of smart card type / Short circuit and thermal protection
8-Pin Handling	C4 / C8 supported
PC / SC Driver Support	Windows [®] 2000, 2003/2008 Server, Windows [®] CE 5.0 / CE.NET / CE 6.0 (depending on hardware), Windows [®] XP / Vista / 7 (32 bit / 64 bit), Linux [®] and Mac [®] OS X (10.5.x Intel)
Embedded Technology	Please contact us for further details
Status Indicator	Symbols in display (for ready / card operation / secure mode)
Color	Two-tone gray
Options	Customer-specific logo, label and colors: available upon request
Composition	ABS
Connector Cable	70.9" (180 cm)
Durability	100,000 insertions
Meantime Between Failure (MTBF)	500,000 hours
Compliance / Certification	Microsoft [®] WHQL ³ , EMV ² 2000 Level 1, ISO 7816, HBCI ⁴ , USB 2.0 (USB 1.1 compatible), CCID ¹ , Common Criteria EAL 3+, GSA FIPS 201 approved product list
Safety / Environmental	CE, WEEE, FCC, UL, RoHS
Warranty	Two-year manufacturer's warranty. (For drivers, see complete lifetime support policy.)

1 = Chip Card Interface Device, 2 = Europay[®] MasterCard[®] Visa[®], 3 = Windows[®] Hardware Quality Lab, 4 = Homebanking Computer Interface



North America: +1 949 732 2000
Toll Free: 1 800 237 7769
Europe, Middle East, Africa: +44 1440 714 850
Asia Pacific: +852 3160 9800
Latin America: +52 55 5081 1650

hidglobal.com

ASSA ABLOY

An ASSA ABLOY Group brand

© 2012 HID Global Corporation. All rights reserved. HID, the HID logo, OMNIKEY and the OMNIKEY logo are trademarks or registered trademarks of HID Global in the U.S. and/or other countries. All other trademarks, service marks and product or service names are trademarks or registered trademarks of their respective owners.
2012-04-03-OK-3821-en-ds Rev. 10/2011